

Frequencies

Notes		
Output Created		20-FEB-2023 13:54:32
Comments		
Input	Data	C:\Users\ayesh\OneDrive\Desktop\PHD FEB 18 2023\Paper 2\Analysis\SPSS Analysis\2023-02-18-Survey-analysis.sav
	Active Dataset	DataSet1
	Filter	<none>
	Weight	<none>
	Split File	<none>
	N of Rows in Working Data File	28
Missing Value Handling	Definition of Missing	User-defined missing values are treated as missing.
	Cases Used	Statistics are based on all cases with valid data.
Syntax		FREQUENCIES VARIABLES=Q1_4_year_L IP_founded Q1_6_yearsupporting_acce ss_healthcare Q1_7_numberFTE_staff Q1_8_numberPTE_staff Q1_11_staff_spoken_langu age_otherthan_English /NTILES=4 /STATISTICS=STDDEV VARIANCE RANGE MEAN MEDIAN MODE SKEWNESS SESKEW KURTOSIS SEKURT /BARCHART PERCENT /ORDER=VARIABLE.
Resources	Processor Time	00:00:04.94
	Elapsed Time	00:00:02.17

[DataSet1] C:\Users\ayesh\OneDrive\Desktop\PHD FEB 18 2023\Paper 2\Analysis\SPSS Analysis\2023-02-18-Survey-analysis.sav

Year when your LIP was founded

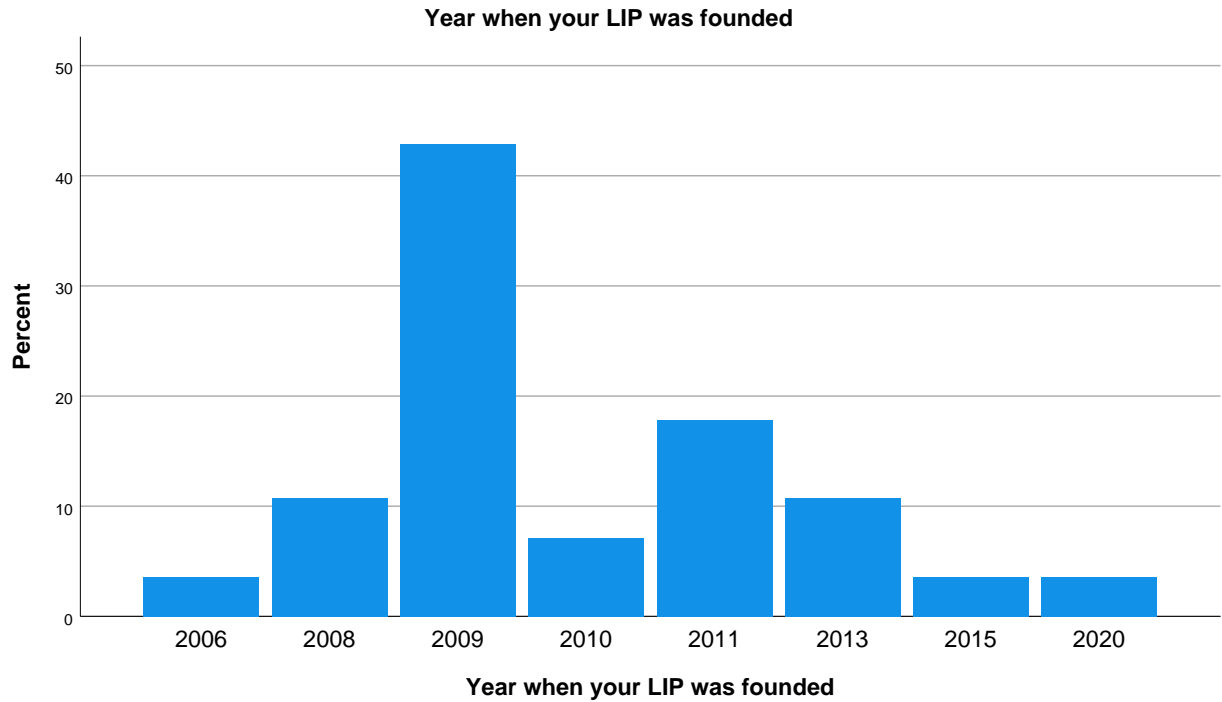
Statistics

Year when your LIP was founded

N	Valid	28
	Missing	0
Mean		2010.25
Median		2009.00
Mode		2009
Std. Deviation		2.689
Variance		7.231
Skewness		1.977
Std. Error of Skewness		.441
Kurtosis		5.617
Std. Error of Kurtosis		.858
Range		14
Percentiles	25	2009.00
	50	2009.00
	75	2011.00

Year when your LIP was founded

	N	%
2006	1	3.6%
2008	3	10.7%
2009	12	42.9%
2010	2	7.1%
2011	5	17.9%
2013	3	10.7%
2015	1	3.6%
2020	1	3.6%



Number of years the LIP has been supporting access to primary healthcare services Note: If none, insert "0". If less than 1 year, insert "less than 1 year".

Statistics

Number of years the LIP has been supporting access to primary healthcare services Note: If none, insert "0". If less than 1 year, insert "less than 1 year".

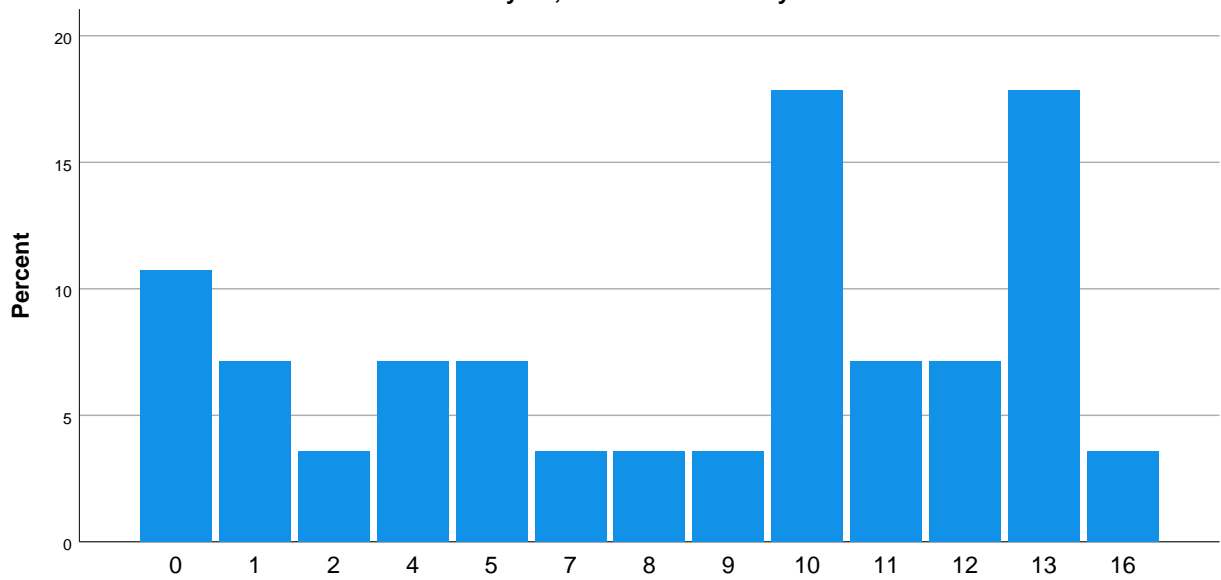
N	Valid	28
	Missing	0
Mean		7.96
Median		10.00
Mode		10 ^a
Std. Deviation		4.857
Variance		23.591
Skewness		-.415
Std. Error of Skewness		.441
Kurtosis		-1.132
Std. Error of Kurtosis		.858
Range		16
Percentiles	25	4.00
	50	10.00
	75	12.00

a. Multiple modes exist. The smallest value is shown

**Number of years the LIP
has been supporting
access to primary
healthcare services Note:
If none, insert “0”. If less
than 1 year, insert “less
than 1 year”.**

	N	%
0	3	10.7%
1	2	7.1%
2	1	3.6%
4	2	7.1%
5	2	7.1%
7	1	3.6%
8	1	3.6%
9	1	3.6%
10	5	17.9%
11	2	7.1%
12	2	7.1%
13	5	17.9%
16	1	3.6%

Number of years the LIP has been supporting access to primary healthcare services Note: If none, insert “0”. If less than 1 year, insert “less than 1 year”.



Number of years the LIP has been supporting access to primary healthcare services Note: If none, insert “0”. If less than 1 year, insert “less than 1 year”.

How many FTEs (full time equivalents) are on staff with your LIP?

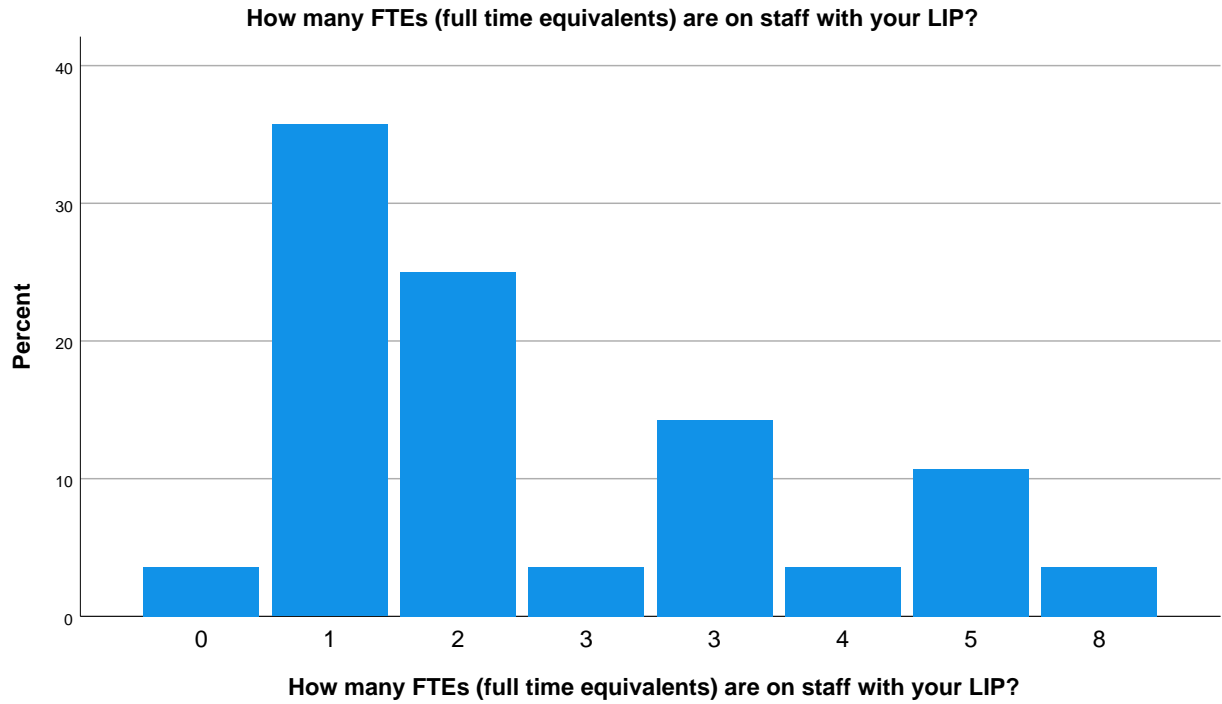
Statistics

How many FTEs (full time equivalents) are on staff with your LIP?

N	Valid	28
	Missing	0
Mean		2.34
Median		2.00
Mode		1
Std. Deviation		1.743
Variance		3.038
Skewness		1.556
Std. Error of Skewness		.441
Kurtosis		2.890
Std. Error of Kurtosis		.858
Range		8
Percentiles	25	1.00
	50	2.00
	75	3.00

How many FTEs (full time equivalents) are on staff with your LIP?

	N	%
0	1	3.6%
1	10	35.7%
2	7	25.0%
3	1	3.6%
3	4	14.3%
4	1	3.6%
5	3	10.7%
8	1	3.6%



How many PTEs (part time equivalents) are on staff with your LIP?

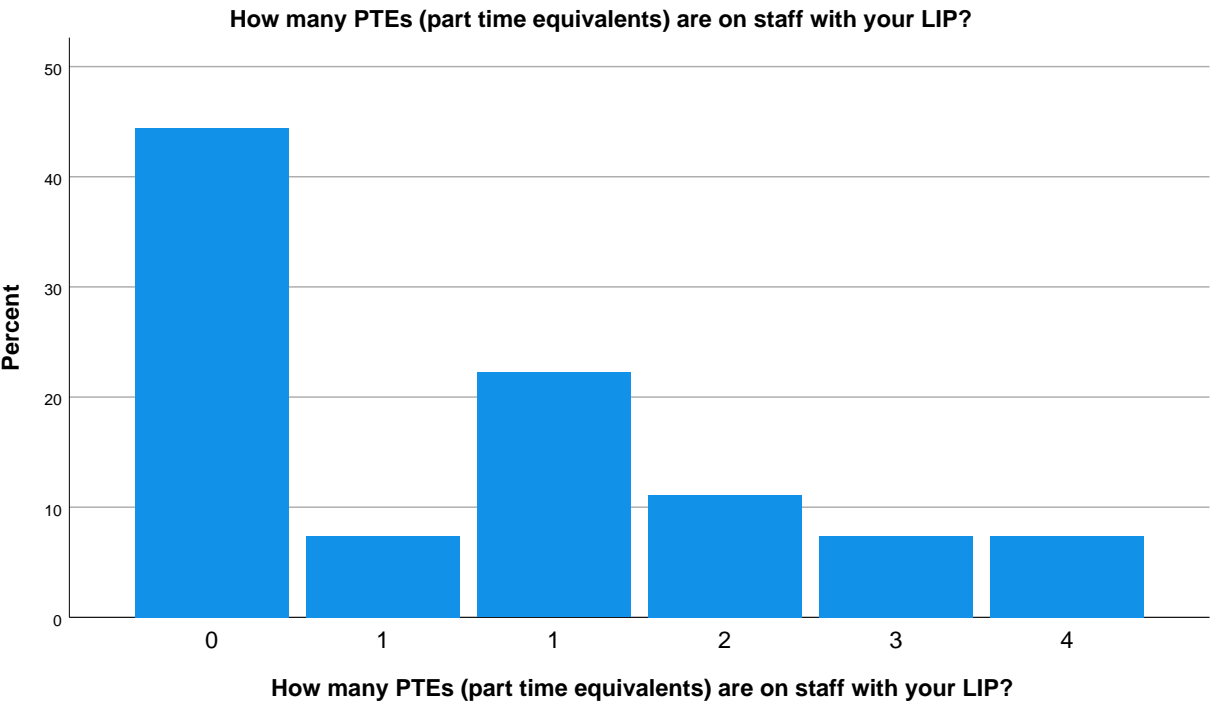
Statistics

How many PTEs (part time equivalents) are on staff with your LIP?

N	Valid	27
	Missing	1
Mean		1.00
Median		.50
Mode		0
Std. Deviation		1.263
Variance		1.596
Skewness		1.251
Std. Error of Skewness		.448
Kurtosis		.598
Std. Error of Kurtosis		.872
Range		4
Percentiles	25	.00
	50	.50
	75	2.00

How many PTEs (part time equivalents) are on staff with your LIP?

	N	%
0	12	42.9%
1	2	7.1%
1	6	21.4%
2	3	10.7%
3	2	7.1%
4	2	7.1%
Missing System	1	3.6%



number of spoken languages of LIP staff at home or at the LIP, other than English

Statistics

number of spoken languages of LIP staff at home or at the LIP, other than English

N	Valid	28
	Missing	0
Mean		2.11
Median		2.00
Mode		2
Std. Deviation		1.833
Variance		3.358
Skewness		1.463
Std. Error of Skewness		.441
Kurtosis		3.084
Std. Error of Kurtosis		.858
Range		8
Percentiles	25	1.00
	50	2.00
	75	3.00

**number of spoken
languages of LIP staff at
home or at the LIP, other
than English**

	N	%
0	5	17.9%
1	6	21.4%
2	8	28.6%
3	5	17.9%
4	2	7.1%
6	1	3.6%
8	1	3.6%

